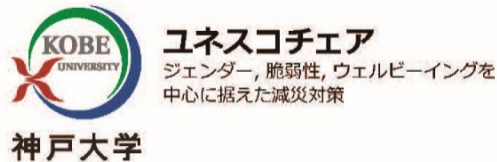




Kobe University UNESCO Chair Gender, vulnerability and well-being in disaster risk reduction support

Greetings from Kobe!

Ronni Alexander
Chair-holder
16 November 2024



Thank you
MFU for
organizing this
importance
conference



What is a UNESCO Chair?



- Objective: creation of a university network for:

- Teaching
- Research
- Cross-border sharing of knowledge

UNESCO Chairs as of 2024.11
Worldwide: 1000 Chairs, 45
UNITWIN networks in 120
countries
Japan: 14

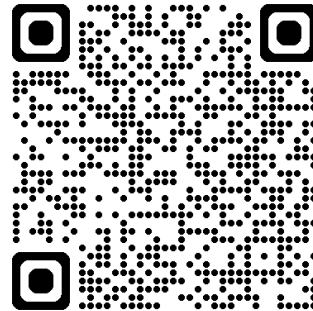
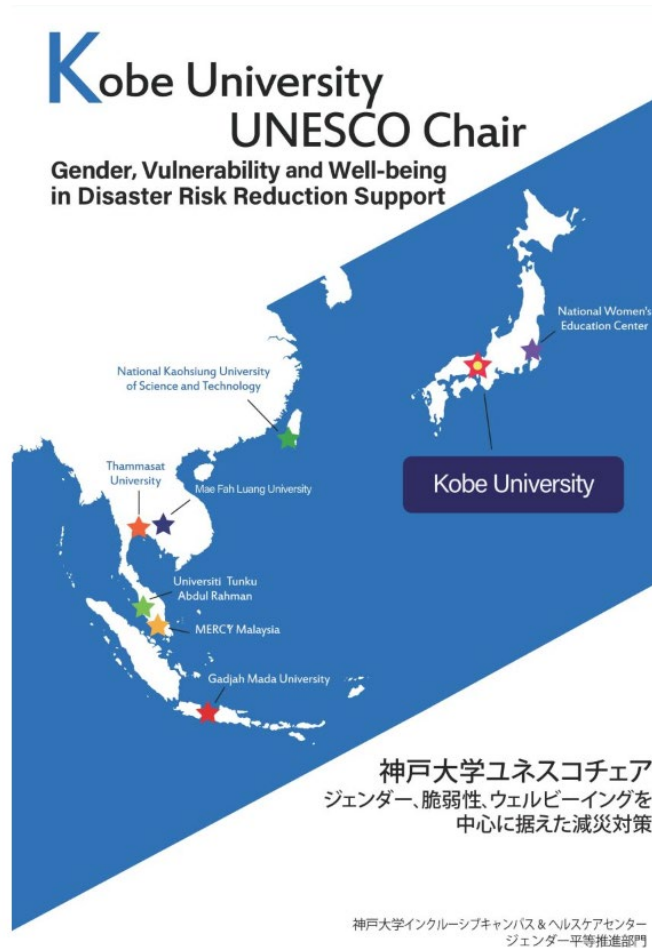
- Approval

- Needs approval by UNESCO headquarters
- Four-year period
- No accompanying funding

- Role

- Contribute to research, education, partnering, community outreach



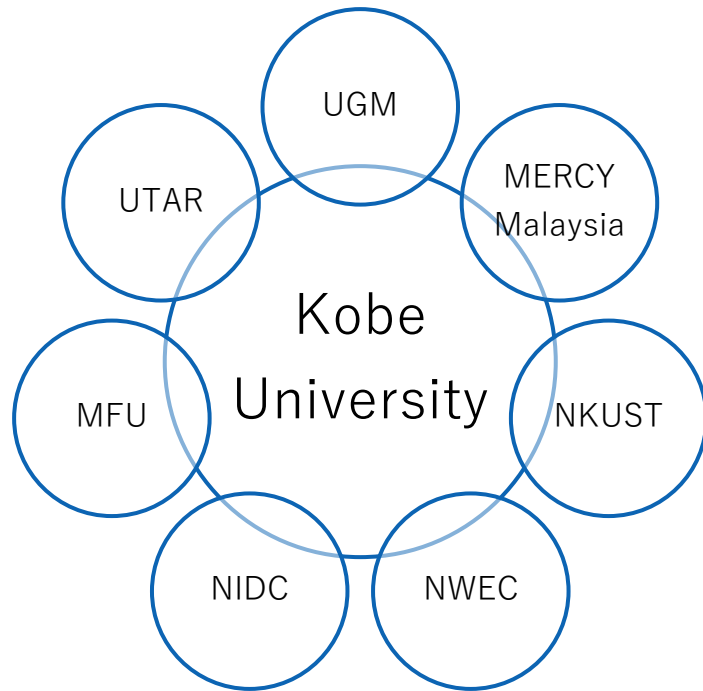


<https://www.office.kobe-u.ac.jp/opge-kyodo-sankaku/project/unesco/>

Kobe University UNESCO Chair

- Title: Gender, Vulnerability and Well-being in Disaster Risk Reduction Support
- Run by Kobe University Gender Equality Office
- Purpose:
 - Share experience of disaster from Kobe University to the world
 - Deepen connections with other countries, institutions to create a safer and more inclusive world
- Duration: 4 years; 1st term: 2018 - 2022; 2nd term: 2022 - 2026
- Only UNESCO Chair on gender & disaster
- Under supervision of UNESCO Women's Division
- Part of a UNITWIN Network on Gender Equality (20 chairs) coordinated by the UNESCO Regional Chair on Women, Science and Technology in Latin America, based in FLACSO Argentina

Partner Institutions: 5 countries, 8 institutions, many different fields



- **MFU:** School of Social Innovation, Mae Fah Luang University, Thailand
- **UTAR:** Universiti Tunku Abdul Rahman, Malaysia
- **UGM:** Gadjah Mada University, Indonesia
- **NKUST:** National Kaohsiung University of Science and Technology, Taiwan
- **NIDC:** Network for International Development Cooperation, Thammasat University, Thailand
- **Mercy Malaysia,** Malaysia
- **NWEC:** National Women's Education Center, Japan
- **Kobe University,** Japan

Tasks of our UNESCO Chair: Education, research, outreach



This workshop

RESEARCH	EDUCATION/ AWARENESS	GUIDELINES	POLICY RECOMMENDATIONS	DDR NETWORK EXPANSION
Joint research with partners <ul style="list-style-type: none">Gender sensitive and inclusive guidelines for disaster risk reductionBuild multidisciplinary model for DRR	Awareness & strategy implementation <ul style="list-style-type: none">Training for students, professional, policy makersDDR awareness activities for local communityDevelop teaching materials	Establish guidelines <ul style="list-style-type: none">Circulate and disseminate through seminars, symposia, HP, etc.	Policy recommendations <ul style="list-style-type: none">Should meet local needsShould aim to build more resilient and inclusive society	Expansion of DRR network <ul style="list-style-type: none">Build international DRR network based on gender equality, social inclusion and well-being

Achievements of the Education Program

- 2018, 2019 2-week Summer Course at Gadjah Mada University in Indonesia; students from UGM, NKUST, KU
- On-line from 2020 with students from all the partner universities
- Plans for 2024 online program
- Some students have gone for further graduate study
- All students said they had a good experience and learned a lot
- Many students expressed an increased interest in disaster risk reduction



Achievements of the Kobe University UNESCO Chair Research Program

- Edited volume, Springer
- Part of the Kobe University Monograph Series in Social Science Research
- 12 Chapters, 235 pages
- Contributions from each of the partner institutions
- Case studies of disaster focusing on gender and vulnerability, policy perspective

2024/11/16

Ronni Alexander
Siriporn Wajjwalku *Editors*

Making Disaster Safer

A Gender and Vulnerability Approach

R. Alexander

The UNESCO Chair international seminars

- Participants
 - Partner institutions
- Purpose
 - Increase our knowledge about issues relating to gender, vulnerability and well-being in disaster support
 - Develop a common language to discuss these issues
 - Different academic disciplines
 - Different theoretical perspectives
- Prior seminars
 - 2018 Kick-off seminar, Kobe
 - 2019 MFU: book project begins
 - 2020 UTAR working on the book
 - 2021 NKUST (on-line) "Climate Change and Disaster Relief"
 - 2022 "2nd term Kick-off, Kobe University (on-line)"
 - 2023 "Learning from COVID-19"

2024 Symposium: Navigating Gender Equality and Well-Being: Climate Change Impacts towards Sustainable Development

- Purpose
 - Address the impact of climate change from the perspective of gender equality and well-being
 - Further our work and discuss how to contribute to meeting the goals of the Kobe University UNESCO Chair
 - Guidelines for disaster support responsive to gender, vulnerability and well-being, development of curriculum/classroom materials
 - Dissemination of information
- Importance
 - Climate change is one of the most urgent issues of our time
 - Gender inequality makes the impact of climate change more severe, affecting the well-being of everyone
 - Gender equality is a prerequisite for sustainable development

UNIVERSITAS GADJAH MADA 國立高雄科技大學 National Kaohsiung University of Science and Technology UTAR UNIVERSITI TUNKU ABDUL RAHMAN Shifa Tameer-e-Millat University شفا تعمیر-المیلٹ یونیورسٹی

**UNESCO Chair Kobe – MFU
Online International Symposium 2024**

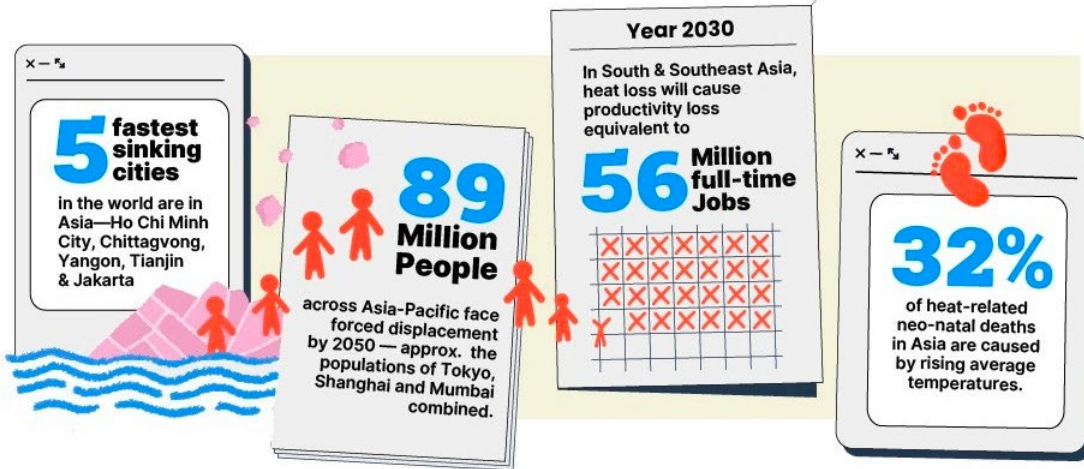
16 November 2024
from 10.00 am – 04.00 pm (ICT) ONLINE

**Navigating Gender Equality and Well-Being:
Climate Change Impacts towards Sustainable Future**

**A Presentation from the UNESCO Chair Country Members
(10.00 am - 01.00 pm):**

- 1) Kobe University (KU), Japan
- 2) Universitas Gadjah Mada (UGM), Indonesia
- 3) Universiti Tunku Abdul Rahman (UTAR), Malaysia
- 4) National Kaohsiung University of Science and Technology (NKUST), Taiwan

FREE REGISTER NOW



Climate Action: Bridging the gaps



Table 1.1: Beliefs, Concerns, and Support for Policies on Climate Change
(% share of respondents)

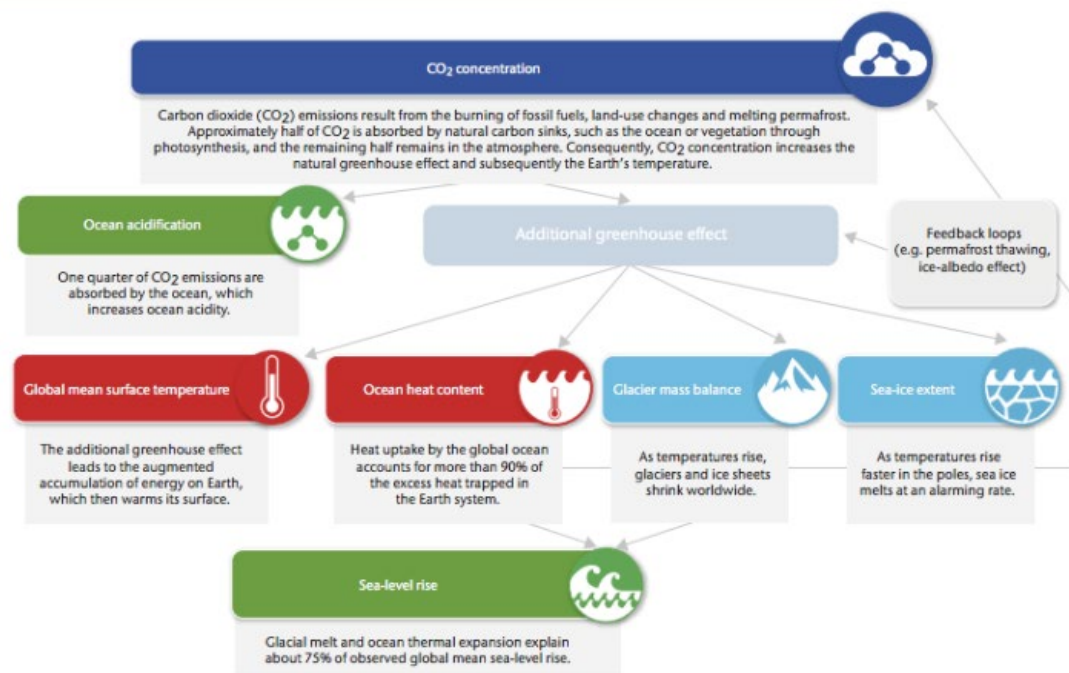
	CCA	East Asia			South Asia				Southeast Asia						
espondents	Kazakhstan	PRC	Hong Kong, China	Taipei, China	Bangladesh	India	Pakistan	Sri Lanka	Indonesia	Malaysia	Philippines	Singapore	Thailand	Viet Nam	Total
...is a serious problem	88	86	87	94	91	90	92	90	91	84	90	94	92	96	91
e now and in the next	87	82	82	91	90	94	89	93	89	87	90	92	88	98	90
mily now or within the	75	78	74	85	86	87	86	83	86	79	86	86	86	92	84
s taken action to change	53	83	68	66	71	80	42	46	55	54	70	81	42	82	64
	43	37	37	50	55	63	81	50	62	67	54	60	62	27	54
	44	55	46	34	47	58	32	41	47	47	71	32	51	67	48
weather	44	60	56	61	37	32	27	45	54	45	46	50	48	57	47
agriculture/higher food food security	45	39	39	47	31	25	22	37	40	35	34	41	40	28	36
	46	46	36	41	37	21	17	34	47	22	21	29	57	43	35
tions limiting emissions standards for buildings	57	61	62	63	44	67	36	59	44	47	43	60	36	60	53
	74	71	71	70	56	75	52	69	56	63	59	68	50	76	65
					53	74	42	64	37	47	45	53	46	68	54

Why focus on climate change?
Asia is the region most impacted by climate change

...related issue. Green denotes higher share; red










Interconnections between the WMO climate indicators



Climate indicators and relevant Sustainable Development Goals		1	2	3	6	7	8	9	10	11	13	14	15	16
		NO POVERTY	ZERO HUNGER	GOOD HEALTH AND WELL-BEING	CLEAN WATER AND AFFORDABLE ENERGY	AFRORDABLE AND CLEAN ENERGY	DECENT WORK AND ECONOMIC GROWTH	INDUSTRIALIZATION, INNOVATION AND INFRASTRUCTURE	UNEQUALITY WITHIN AND AMONG COUNTRIES	SUSTAINABLE CITIES AND COMMUNITIES	CLIMATE ACTION	IFE OCEANS	IFE LAND	IFE PEACE, JUSTICE AND STRONG INSTITUTIONS
CO ₂ concentration														
Ocean acidification														
Global mean surface temperature														
Ocean heat content														
Sea-ice extent														
Glacier mass balance														
Sea-level rise														

Climate change seriously impacts achievement of the sustainable development goals

Gender inequality is exacerbated by climate change impacts

Climate change impacts		Impacts exacerbate gender inequalities
Crop failure		Household food provision; increasing work load
Fuel shortage		Household fuel provision; more time for fuelwood collection
Water scarcity		Household water provision; contaminated water; more time for water collection
Natural disasters		Women's greater incidence of mortality
Disease		Lack of access to health care; women's burden as care givers
Displacement		Forced migration increases women's vulnerability
Conflict		Loss of lives; violence against women

<https://www.fao.org/typo3temp/pics/88d4a3ab64.gif>

Women and marginalized genders are the most seriously impacted



Climate change affects the well-being of everyone, especially women and vulnerable people

- Women may be less able to access information at times of crisis
- Women are less able to access resources for recovery
- Women's care work and responsibilities increase during crises
- Crises lead to girls being taken out of school, and to early marriage
- Crises affect women's reproductive health and rights

Climate impacts exacerbate gender inequalities

- Disasters are more deadly for women
- Increased-gender based violence

A gender perspective with a focus on vulnerability and well-being can help to make a safer world

- If the world is safer for the most vulnerable in our communities, it will be safer for everyone

Our task

- To look at the relationships among impacts of climate change
- See how they affect women and marginalized people
- Think about mitigation strategies that will enhance the well-being of everyone
- Increase our knowledge and understanding



"Navigating Gender Equality and Well-Being: Climate Change Impacts towards Sustainable Future"

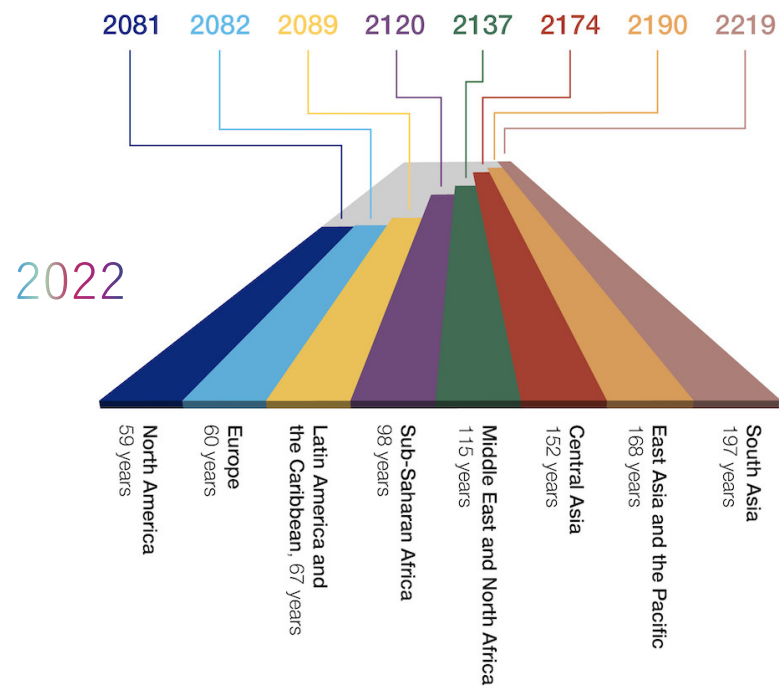
- **Presentation 1:** Climate Change Impact on Annual and Seasonal Rainfall Variability: A Case Study in Simunjan, Sarawak from Universiti Tunku Abdul Rahman (UTAR), Malaysia
- 10.50 - 11.10 am
- **Presentation 2:** Challenges and Opportunities of Climate Change for Female Seafarers – Cases in Taiwan by National Kaohsiung University of Science and Technology (NKUST), Taiwan
- 11.10 - 11.25 am
- **Presentation 3:** The Importance of a Gender- transformative Approach to Climate Change by Kobe University (KU), Japan
- 11.25 - 11.40 am
- **Presentation 4:** Addressing Multi-Dimensional Gender Impacts from Climate Disasters in Chiang Rai Province towards Sustainable Development by Mae Fah Luang University (MFU), Thailand
- 11.40 am - 12.05 pm
- Presentation 5: Indonesia
- 12.05- 12.20 pm
- **Presentation 6:** Impact of Climate Change on Health and Well-Being Among University Students by Shifa Tameer e Millat University, Pakistan





We will gather our
different perspectives
and topics into one
special publication!



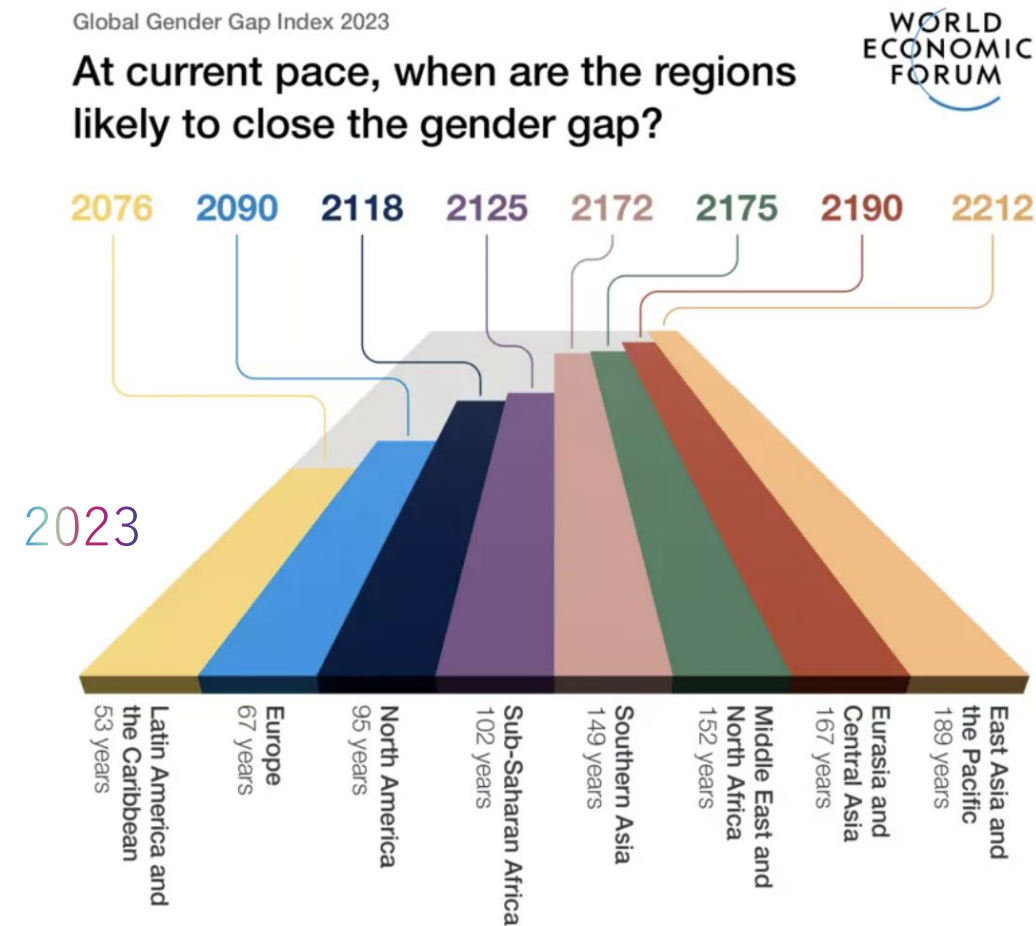


Source: Global Gender Gap Report 2022

Closing the gap:
2023 was worse than 2022

R. Alexander

Global Top 10



Source: Global Gender Gap Report 2023

2024/11/16