



Honolulu Office of Kobe University Newsletter



The Second HOKU Symposium held

INDEX

- News
- Kobe University AY2017 Research
- HOKU Facilities
- Social Media
- Let us know what you think about our English website

◆ NEWS

The Second HOKU (Honolulu Office of Kobe University) Symposium held

On February 5, Kobe University held the Second HOKU (Honolulu Office of Kobe University) Symposium "Intra-Pacific Collaboration for Advanced Academic Research on

Transborderness of Japanese People, Culture and Thoughts". The event took place at Hawaii Imin International Conference Center, East-West Center.

Professor YAMAMOTO Hideyuki (Director, HOKU) chaired the opening remarks where speakers included Kobe University's (KU), Professor MIZUTANI Fumitoshi (Executive Vice President), Professor KATAOKA Tohru (Vice President) and Professor Denise Konan (Dean, College of Social Sciences, University of Hawai'i at Mānoa's) expressed hopes for increased US-Japan collaboration in education, research and academic training to promote higher education development and academic research improvements in the Americas and the pan-Pacific region.

During the symposium, researchers from KU, American University, and

the University of Washington presented or led discussions on a variety of topics on the themes of "Transnational Actors in Asia-Pacific: Practice, Discourse, and Representation" and "Japanese Literature/Thought Crossing the Oceans: To Construct 'Trans-border Japanese Studies'". Discussions, and the Q&A session, were enthusiastic with attendee participation.

Professor KATAOKA closing remarks stated expectations for HOKU to continue acting as a bridge between researchers in the USA, Japan and the pan-Pacific region through its symposia and workshops. With KU and the UH Mānoa having cooperated in the fields of medicine and economics for many years, Professor Kataoka expressed hope that this symposium provides an opportunity for cooperation to expand into humanities fields.

The symposium was a great success, with participants reaffirming scholars' high interest level in Japan from a humanities perspective.

On the same day, Executive Vice President Mizutani, accompanied by Vice President Kataoka and Professor SHIMOMURA Ken-ichi (Director, Office of the Americas), visited the UH Mānoa and met with Dr. Anderson Sutton (Dean, School of Pacific and Asian Studies), Dr. Denise Konan (Dean, College of Social Sciences), Dr. Patricia Steinhoff (Professor and Chair, Department of Sociology), Dr. TARUI Nori (Associate Professor, Department of Economics), Dr. Petrice Flowers (Associate Professor, Department of Political Science) and Dr. KIMURA Ehito (Associate Professor and Undergraduate Chair, Department of Political Science). The participants confirmed intentions to expand and strengthen academic exchange between the institutions and discussed promoting research



exchange across a broad spectrum of disciplines.

KU will continue to use the Honolulu Office as a key location for academic exchange in the pan-Pacific region, promoting collaboration and exchange with institutions in the United States and throughout the Pacific.

http://www.kobe-u.ac.jp/en/NEWS/info/2018_02_15_02.html

After the February 6 symposium, Kobe University (KU) held an Advisory Board meeting at the Honolulu Office of Kobe University in Hawai'i, United States of America. Attending the meeting was board member Professor NAKAMURA Shuji (University of California, Santa Barbara),



Professor SHIMOMURA Ken-ichi (Director, Office of the Americas, Institute for Promoting International Partnerships) chaired the meeting and Professor MIZUTANI Fumitoshi (Executive Vice-President) reported on the new Board composition. This was followed by presentations from Professor OGAWA Matsuto (Executive Vice President) and Professor KATAOKA Tohru (Vice President) followed respectively with presentations on competitive funding acquisition and joint research (especially in medicine) with universities in the Americas.

In discussion afterwards, Professor Nakamura expressed opinions on topics such as university ventures, university donations and evaluated KU's related initiatives.

KU will continue to hold Advisory Board meetings in overseas offices, and work to further enhance our governance.

http://www.kobe-u.ac.jp/en/NEWS/info/2018_02_14_01.html

 isit from University of Southern California

On May 30, a delegation from the University of Southern California's Business Japanese Course consisting of Master Lecturer Ms. KUMAGAI Yuka (The Department of East Asian Languages and Cultures at the USC Dornsife College of Letters, Arts and Sciences) and ten undergraduate students paid a courtesy visit to President TAKEDA Hiroshi. Also attending the meeting were Mr. OTA Toshikazu (International Service Committee Vice Chair of the Rotary Club of Osaka-Southwest) and Professor YAMAMOTO Hideyuki (Graduate School of Humanities).

After an initial greeting from Master Lecturer KUMAGAI, each student introduced themselves in Japanese and an overview of the USC Business Japanese Course was provided. The first two weeks of the course are held at the USC campus developing language skills, learning Japanese business customs, and focusing on case studies. Then the class moves to Japan for the second half of the course to obtain more practical knowledge about Japanese business and society through company visits, business lectures and other activities. During their stay, the delegation members will have an opportunity to collaborate with Kobe University students, including international students, with some activities taking place on KU Rokkodai Campus.



The meeting atmosphere was relaxed and harmonious with participants discussing topics including the Kansai area's historic and culturally rich diversity, baseball culture in the US and Japan, and Japanese Major Leaguers. To conclude the meeting,

President TAKEDA welcomed the delegation expressing hope the students have a fruitful stay in Japan and gain a deeper understanding of Japanese culture and business.

The visit is expected to facilitate greater academic exchange between the University of Southern California and Kobe University.

http://www.kobe-u.ac.jp/en/NEWS/info/2017_06_01.html

Delegation visit from the University of Nebraska

On February 8, a delegation from the University of Nebraska visited Professor YUI Kiyomitsu (Executive Assistant to the President in Charge of International Collaboration). The delegation was led by Dr. Steve Goddard, Interim Vice Chancellor for Research and Economic Development, and accompanied by members of the Hyogo Prefectural Government led by Ms. TARU Sachiko (Hyogo Prefecture, Department of Industry and Labor, International Bureau, International Relations Division). The meeting was also attended by Professor SHIRAI Yasuhito (Kobe University Office of the Americas).

The University of Nebraska is a comprehensive research university established by the state of Nebraska in 1869, with the highest education level in the state. Nebraska is also home to Kawasaki Motors Manufacturing Corp., and there is a close relationship between the state of Nebraska and Hyogo Prefecture. These factors contributed to the realization of this visit.

During the meeting, participants engaged in an active discussion about

the potential for future collaboration between our institutions, focusing on the field of agriculture. The delegation received a brief campus tour from Student PR Ambassadors before visiting the Graduate School of Agricultural Science. Professor TOSA Yukio (Graduate School of Agricultural Science) introduced the group to the laboratories within the graduate school, spanning a wide range of fields.



Kobe University aims to increase exchange with the Americas through our Office of the Americas. We hope this visit will create opportunities for further academic exchange.

http://www.kobe-u.ac.jp/en/NEWS/info/2018_03_09_01.html

Asia-Pacific Workshop on Value Creation 2018 @Kobe University

On March 4, the Asia-Pacific Workshop on Value Creation 2018 @Kobe University took place in the University's Academia Hall for Social Sciences. Dr. Constancio Paranal III, faculty advisor of University of Hawaii at Manoa, and Educational Director of the Japan-America Institute of Management Science (JAIMS), delivered his speech and facilitated a session on the leadership and management skills needed for innovation.



http://www.kobe-u.ac.jp/en/NEWS/info/2018_03_20_01.html

Elementary school students attached to KU visit Hawaii

The elementary school attached to Kobe University is currently implementing the "Kobe University Elementary School GCP (Global Challenge Program)", based on their educational goals to foster the fundamental qualities of global citizenship. From October 15-20 a group of students and teachers visited Honolulu in Hawaii on the HOKU Program. They visited Hahaione Elementary School located near the Honolulu Office of Kobe University for one-week exchange, and historical sites for peace studies and cultural awareness, and spent a portion of the program with host families.



◆ Research at Kobe University



Our research highlights are showcased at [Research at Kobe](#).

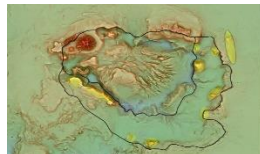
Diverse spectrum of research at Kobe University attracts students, academics, industries and business interests from across the world. Please visit the research news site and see some of our ongoing research. We hope you will be enlightened.

Contact: [intl-relations\(a\)office.kobe-u.ac.jp](mailto:intl-relations(a)office.kobe-u.ac.jp)



- Researchers succeed in developing a genome editing technique that does not cleave DNA
http://www.kobe-u.ac.jp/research_at_kobe_en/NEWS/news/2018_02_27_01.html

Human Development



- Plant discovered that neither photosynthesizes nor blooms
http://www.kobe-u.ac.jp/research_at_kobe_en/NEWS/news/2018_02_09_01.html

Geoscience



- Plant discovered that neither photosynthesizes nor blooms
http://www.kobe-u.ac.jp/research_at_kobe_en/NEWS/news/2017_11_17_01.html

Aquatic Ecology



- When horses are in trouble they ask humans for help
http://www.kobe-u.ac.jp/research_at_kobe_en/NEWS/news/2017_11_15_01.html

Plant Biology

◆ HOKU Facilities



HOKU has a meeting room with space for 15-20 people, Wi-Fi access, and standard equipment such as a screen, projector and whiteboard. It is used for holding seminars and workshops with Kobe University researchers.

Address: JAIS (Japan-America Institute of Management Science)
6660 Hawaii Kai Drive, Honolulu, Hawaii 96825-1192

◆ Social Media

Connect to find events, happenings, and more!



KobeU_Global



KobeUniversity
Global



Kobe University

◆ Let us know what you think about our English website

Connect to find events, happenings, and more!

Feedback is always welcome. Please let us know your opinion by filling in a 3-minute questionnaire about the new website: Link to [questionnaire](#)

We hope you enjoyed reading about some of the activities and events in the Office of the Americas.

The Honolulu Office of Kobe University e-newsletter has been sent to you because you have shown an interest in our activities. If you prefer not to receive it, please send a message to us at [intl-relations \(at\) office.kobe-u.ac.jp](mailto:intl-relations(at)office.kobe-u.ac.jp). Thank you.



[Honolulu Office of Kobe University](#)

6660 Hawaii Kai Drive, Honolulu, Hawaii 96825-1192
Email: [intl-relations \(at\) office.kobe-u.ac.jp](mailto:intl-relations(at)office.kobe-u.ac.jp)