

Greek colonization and problem
of

Phasis'

location in Colchis
(Western Georgia).

Brussels
2018

V. Licheli
Tbilisi State
University

WESTERN GEORGIA, HISTORICAL COLCHIS



WESTERN GEORGIA, INNER PART, HISTORICAL COLCHIS



Pre-colonial time in Colchis

Late Bronze Age (15th – 10th CC BC) in Western Georgia (Colchis) – Argonauts voyage

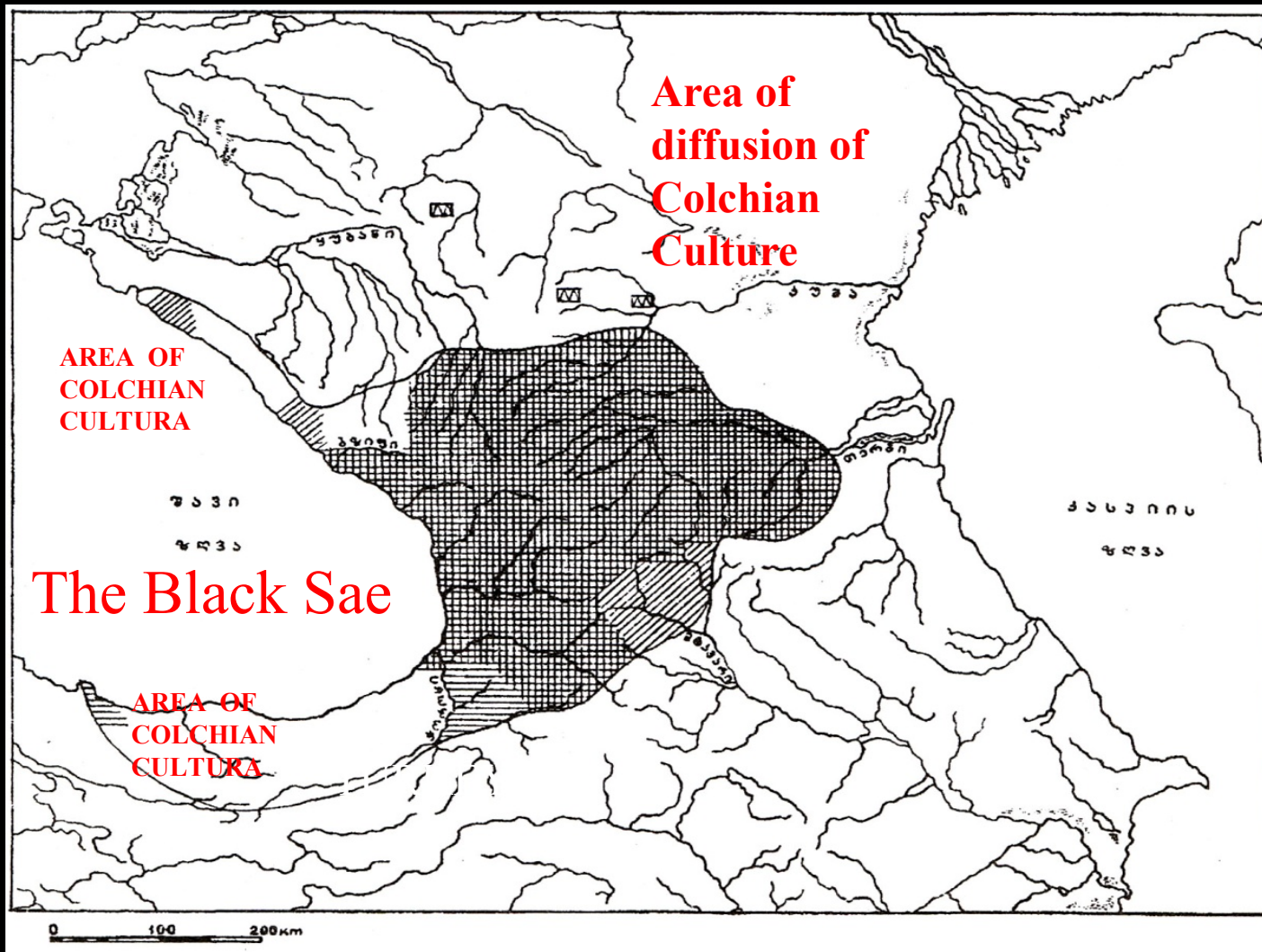


Karst cavity and dinosaur's footprints (50- 60 million years old)

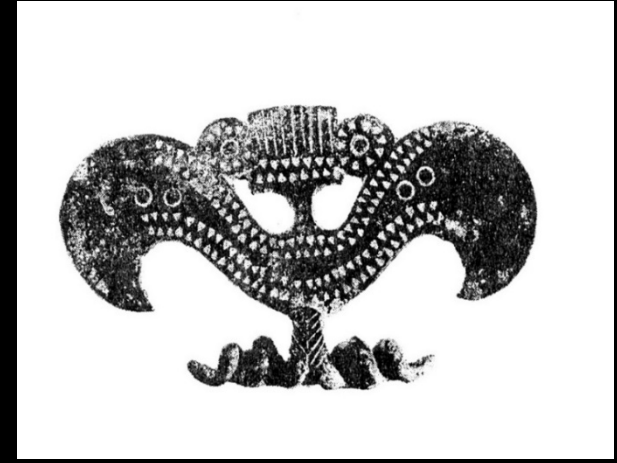
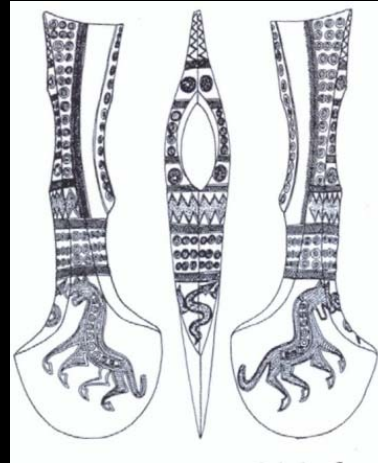


Katskhi pillar, 40 m high, with the church of 6th-8th cc on the top

Pre-colonial time in Colchis (2nd - first half of 1st mill. BC)



Colchian Bronze items



Nature of Colchis and Colchian Collective graves



Items from Colchian Collective graves (8th-7th cc BC)



Items from Colchian Collective graves (8th-7th cc BC)



THE ARCHAEOLOGY OF GREEK COLONISATION~



City Phasis was established during the Greek colonization (6th c BC)

Greek and Roman Written sources about Phasis – river and city:

Herodotus (5^o c BC)

Ps. Scyllaks(4th cent. B.C.).

Eratosthenos (2^o c BC).

Ps. Scymnos

Strabo(1st cent).

Plutarch.

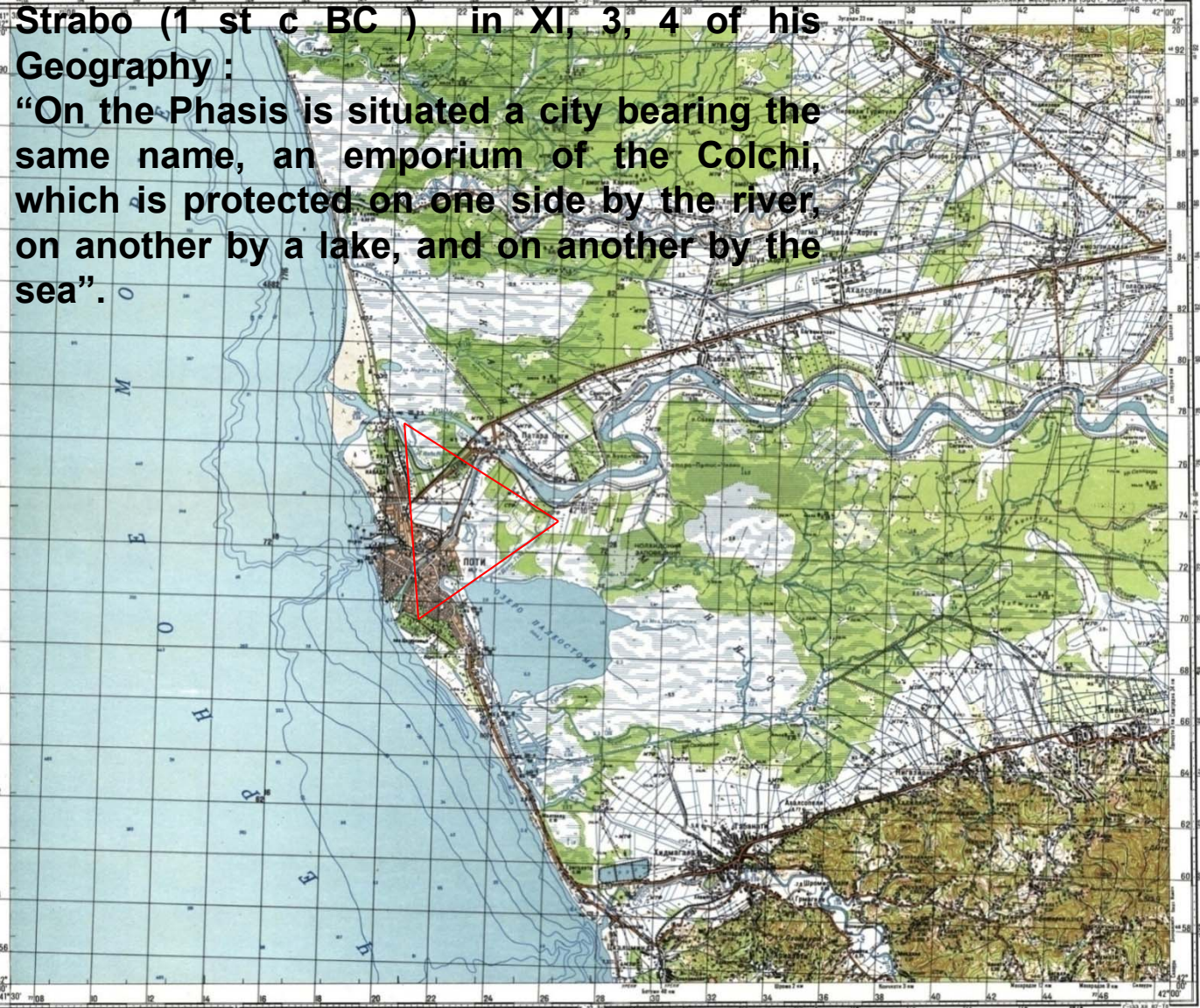
Arrian. 131 AD

Claud. Ptolemaios 2nd c AD

Plinius. 1 ST c AD

Pomp. Mella.

and etc.



Strabo (1 st c BC) in XI, 3, 4 of his Geography :
“On the Phasis is situated a city bearing the same name, an emporium of the Colchi, which is protected on one side by the river, on another by a lake, and on another by the sea”.

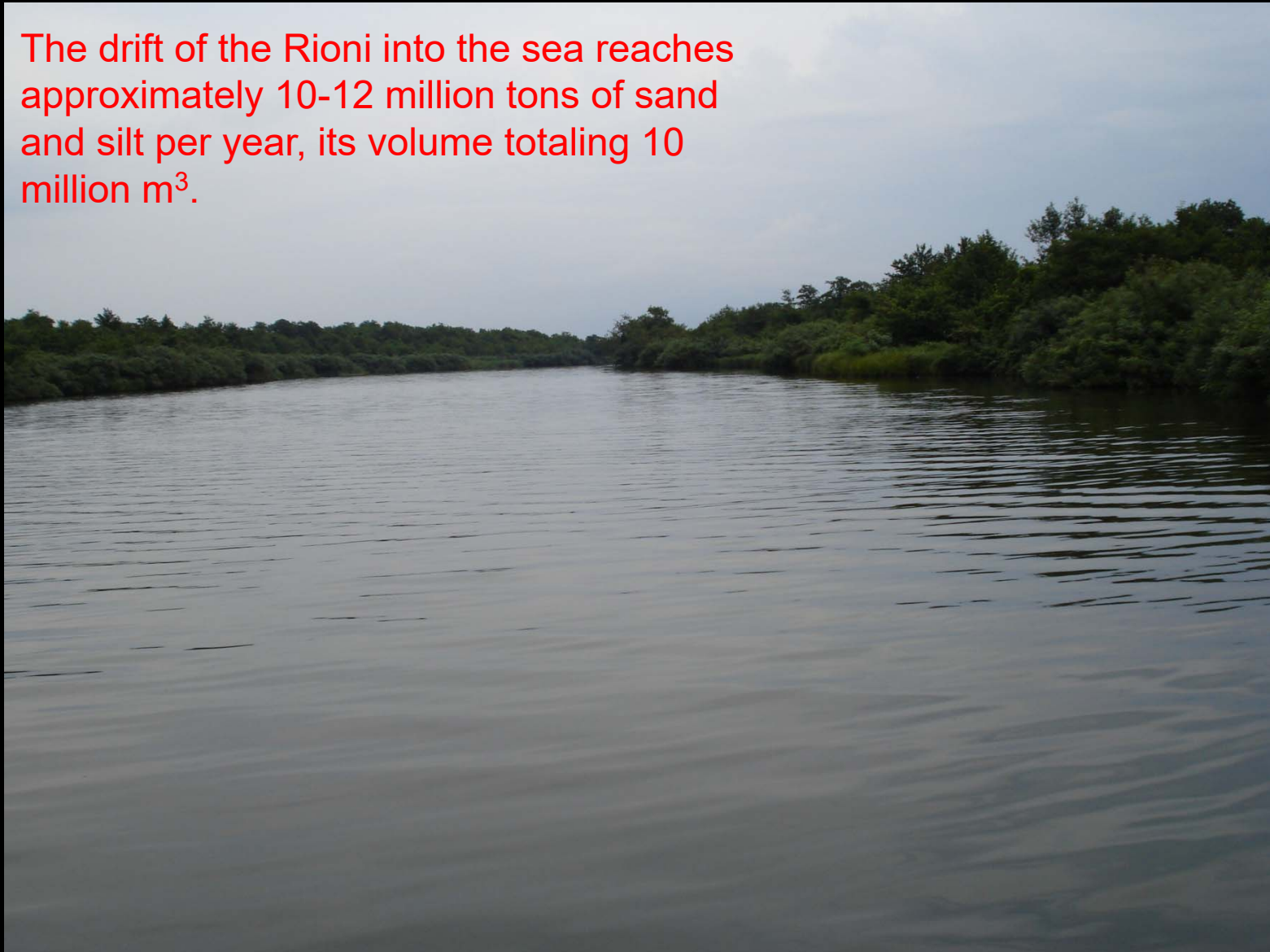
Wetland in Western Georgia – Central Colchis



The source of the river Phasis (Rioni)



The drift of the Rioni into the sea reaches approximately 10-12 million tons of sand and silt per year, its volume totaling 10 million m³.



Traces of river Phasis' bed changes



Meander of river Phasis



Archaeological research in the Paliastomi Lake



Amphorae in the Paliastomi Lake (1st - 8th cc AD)

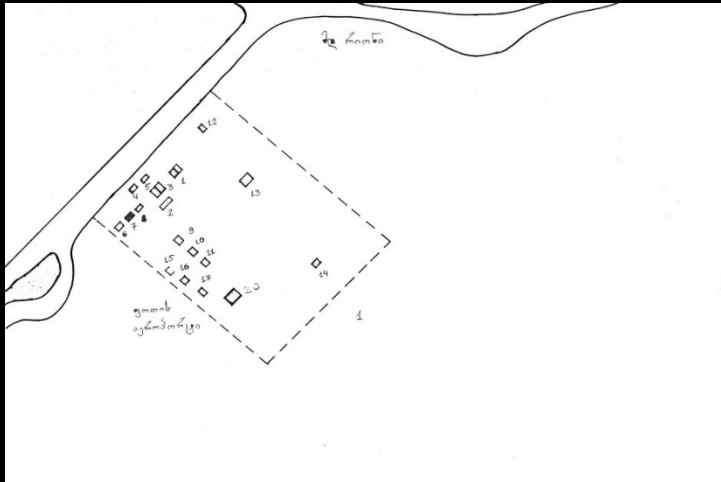




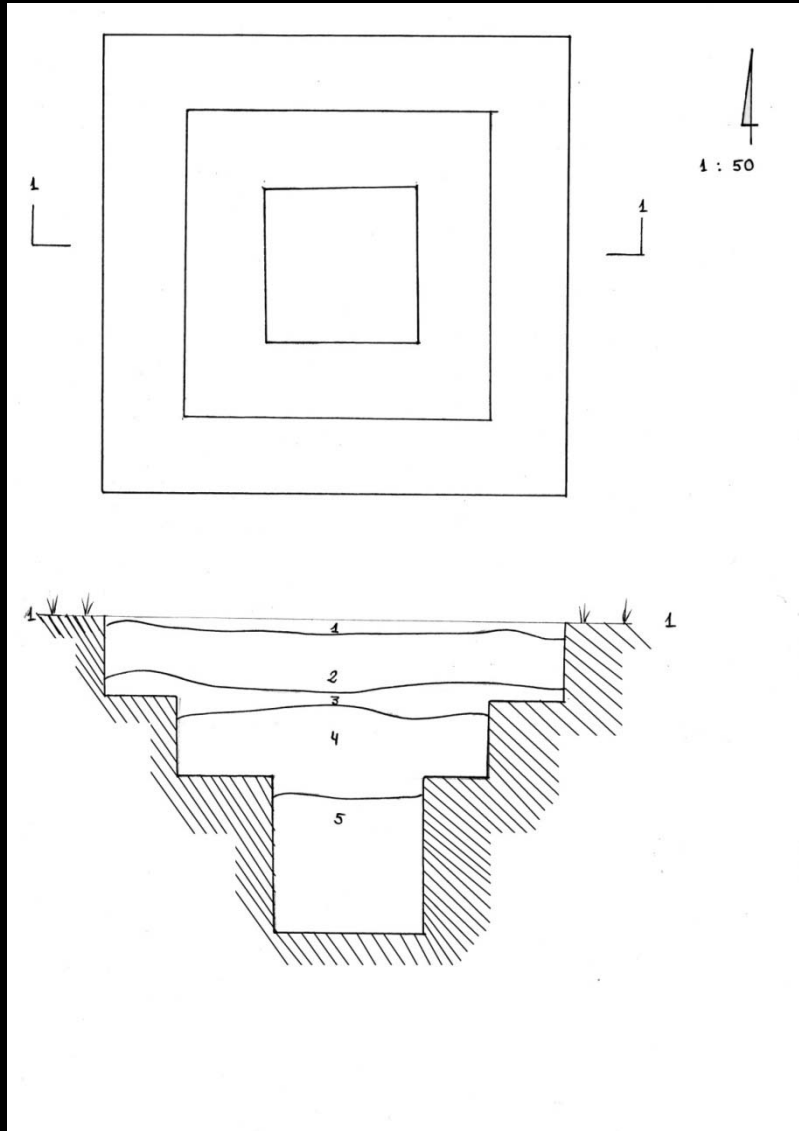
Amphorae from the Paliastomi Lake (1st - 8th cc AD)

Areal photos of Foti airport area with possible traces of early Bizantyne castelum



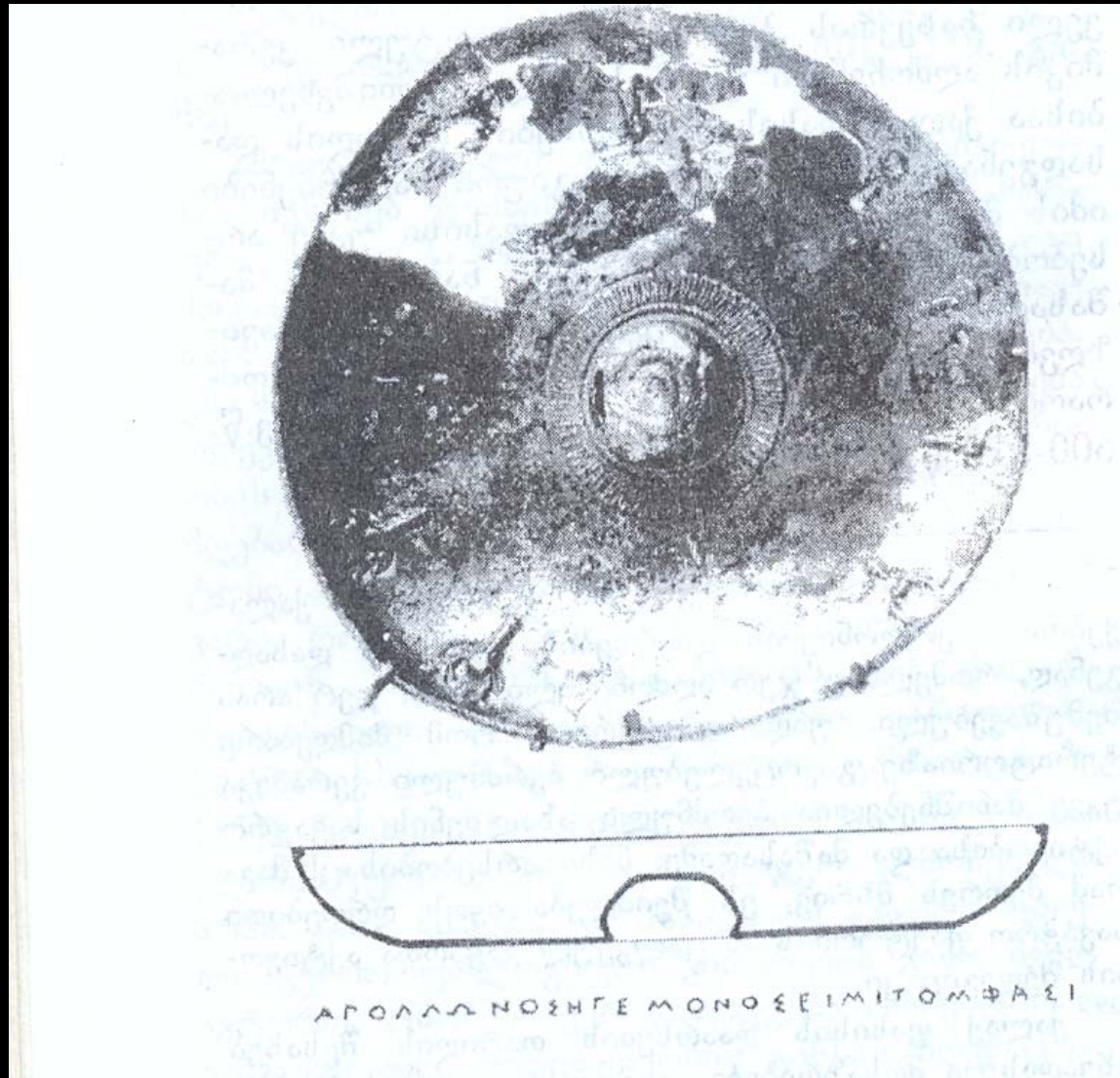


Archaeological trenches in the area of Foti airport



Archaeological trenches in the area of Foti airport

Silver cup from the temple of Apollo in the city Phasis (5th c BC), discovered out of the territory of Colchis



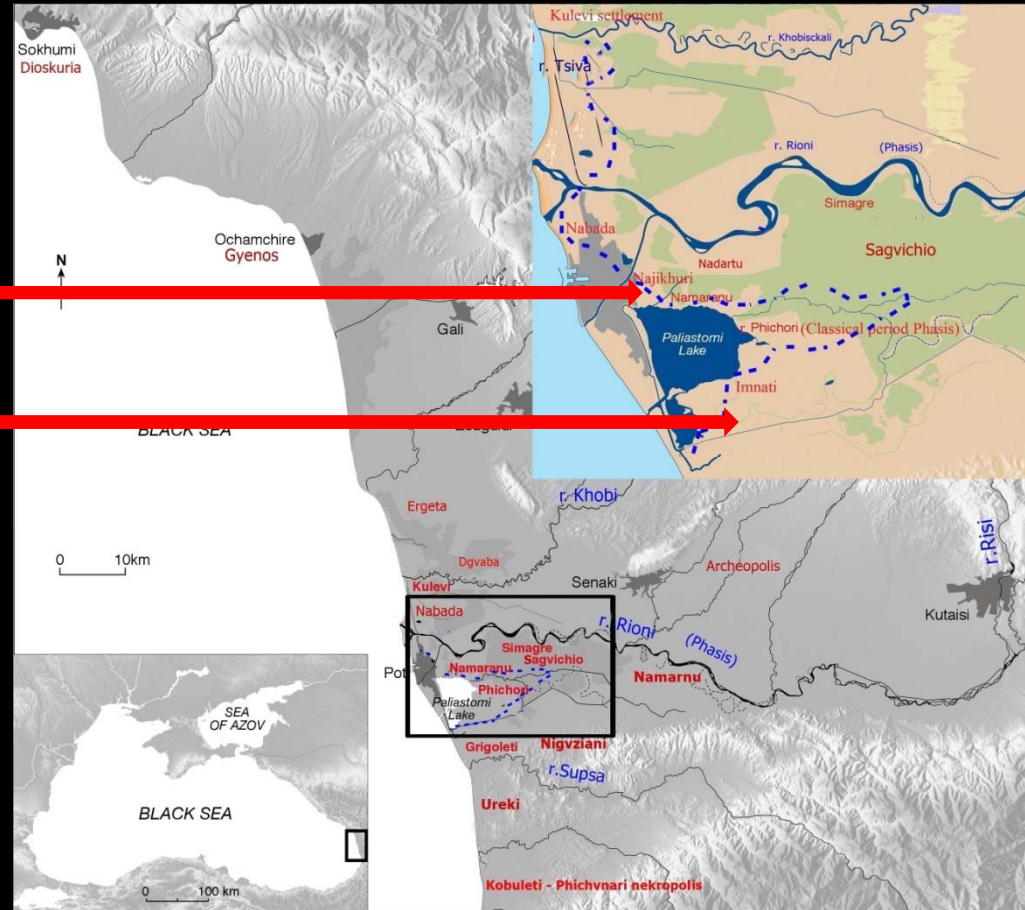
Map of the 12 different opinions about the Phasis location



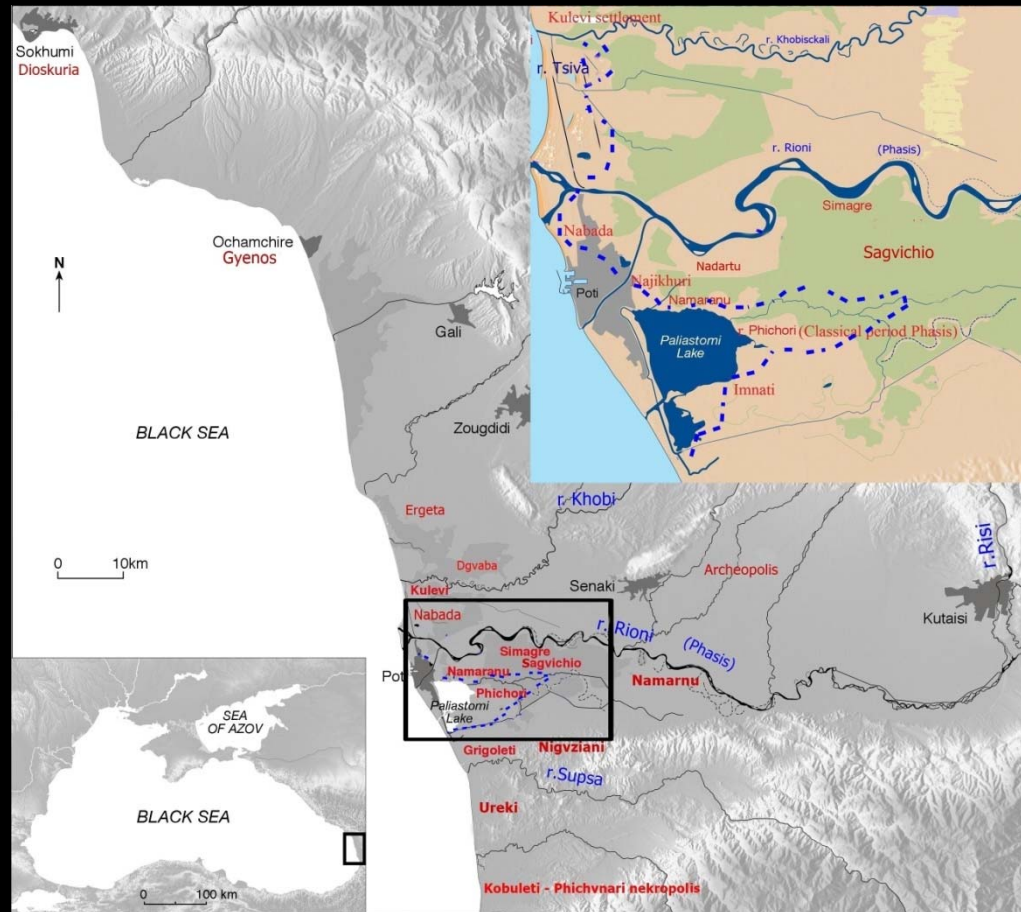
Discussion of thirteenth opinion of possible location of city Phasis

Nabada peat

Imnati peat



Peat is generated in humid areas where the growth of vegetation is excessive and the peat sediment at coastal area is a reliable argument that the sea did not cover the territory where the peat had been accumulating for ages.



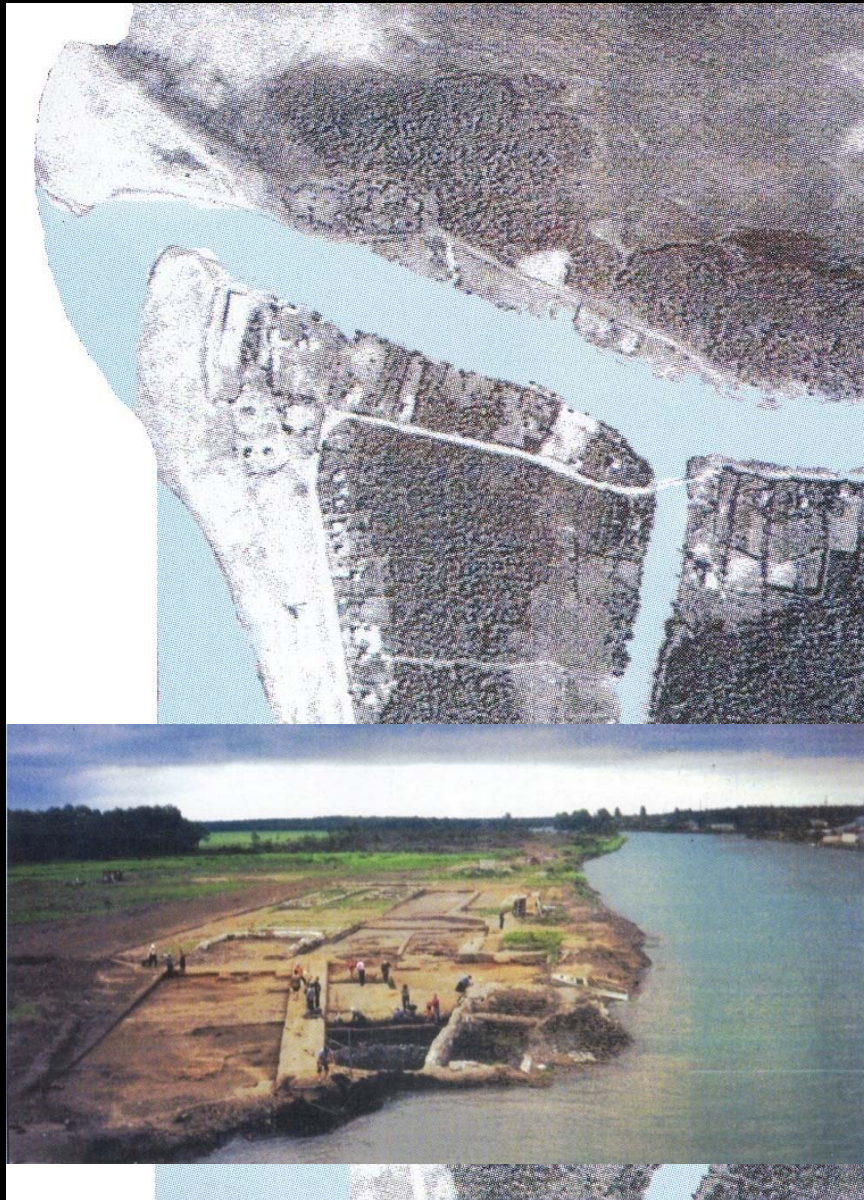
Ptolemy (2nd c AD) :

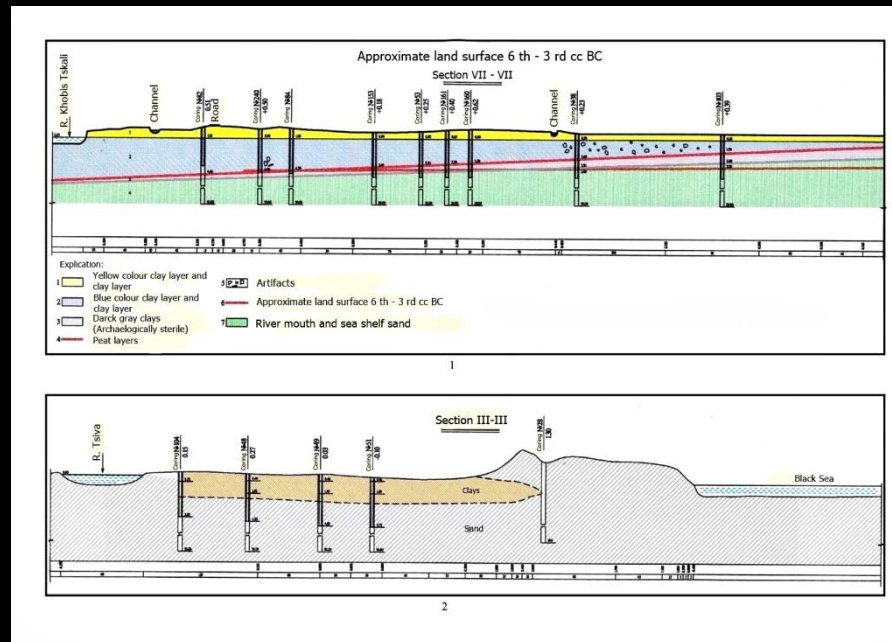
“Colchis is bounded by Pontos Euxinus from the West . . . up to the Phasis cavity”.

Surroundings of city Phasis;



Pre - colonial time - Kulevi, 8th – 7th cc BC

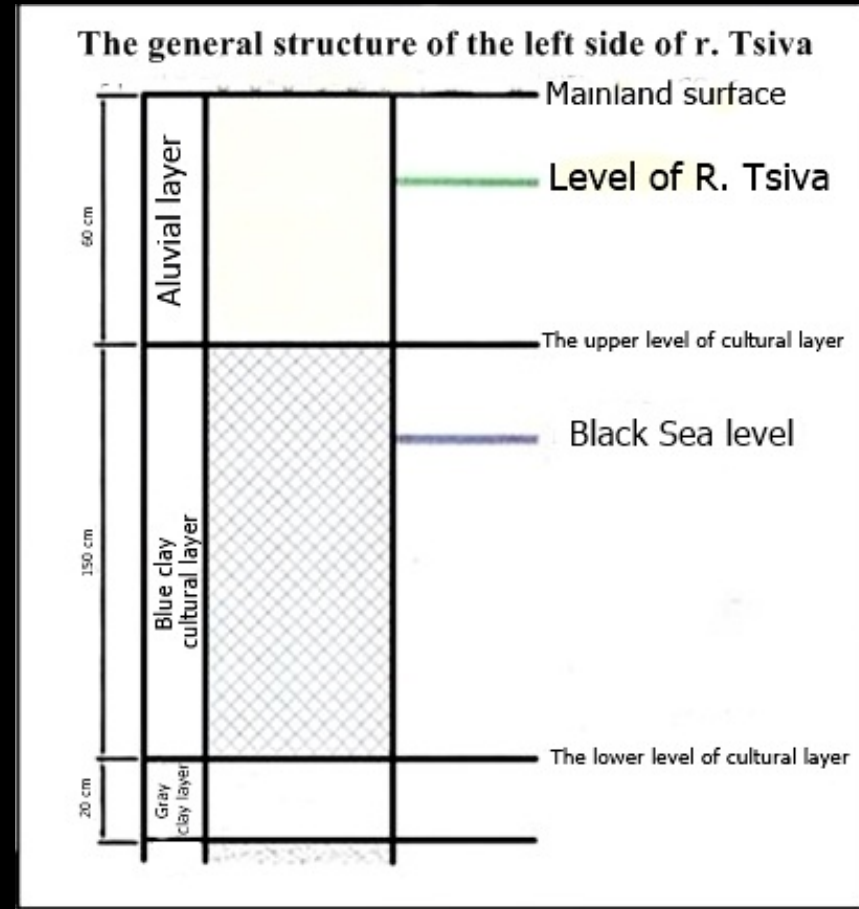




Kulevi settlement was 1,6 m higher artificial hill towards to contemporary surface, on which 4 cultural stratum with total thickness of 3 m is confirmed. Stratigraphy which is confirmed here in accordance with sea level is as follows:

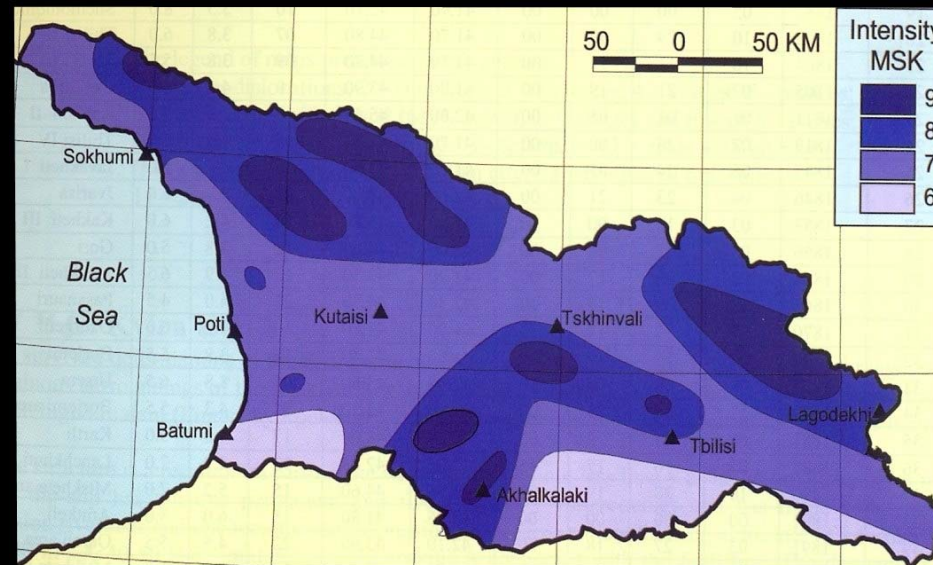
4th stratum – second half of 2nd mill. BC, thickness 0,5m. was located 1,4 m below of current sea level;
 3rd stratum - end of 2nd mill. BC and beginning of 1st mill. BC, was located below the sea level;

Approximate land surface of 6th -3rd cc is located below sea level.



Tsiva settlement lower horizon corresponds to 6th – 5th c BC surface and is located 0,8 m below the sea level.

In Colchis lowland we have more complicated situation than only geomorphologic activities.

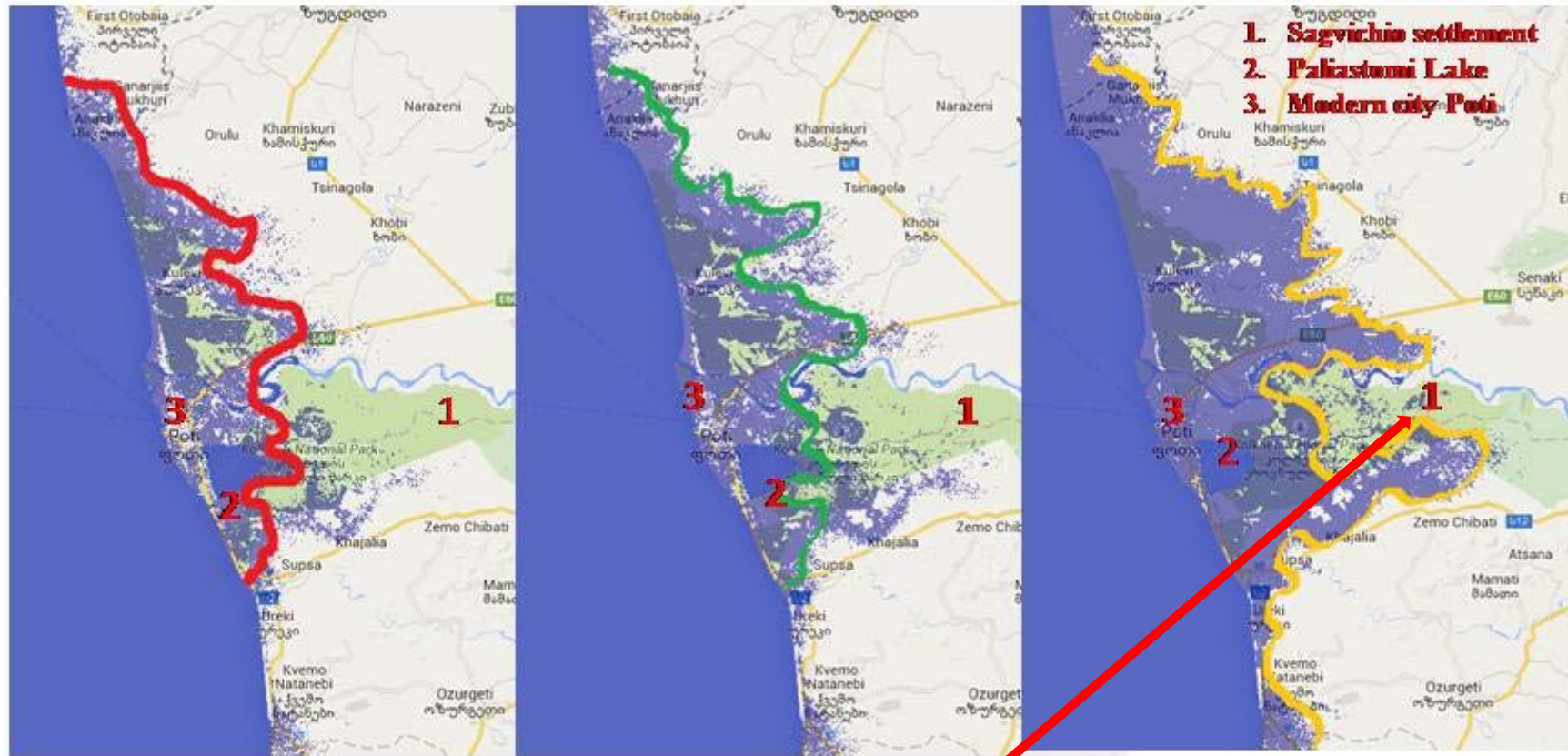


Another Greek colony in Colchis - Dioscuria (Sebastopolis of Roman era) as a result of tectonic fluctuation was sunk.

Two historical earthquakes are determined - 50 AD and 400 AD. which twice destroyed Dioscurias/Sebastopolis. In both cases epicenter of earthquake was located South, in the sea, in the depth of 10 km.

Existence of cultural layers below Black Sea level in this area is interpreted by activated tectonic alternations.

Possible changes of the Eastern costal line of the Black Sea.



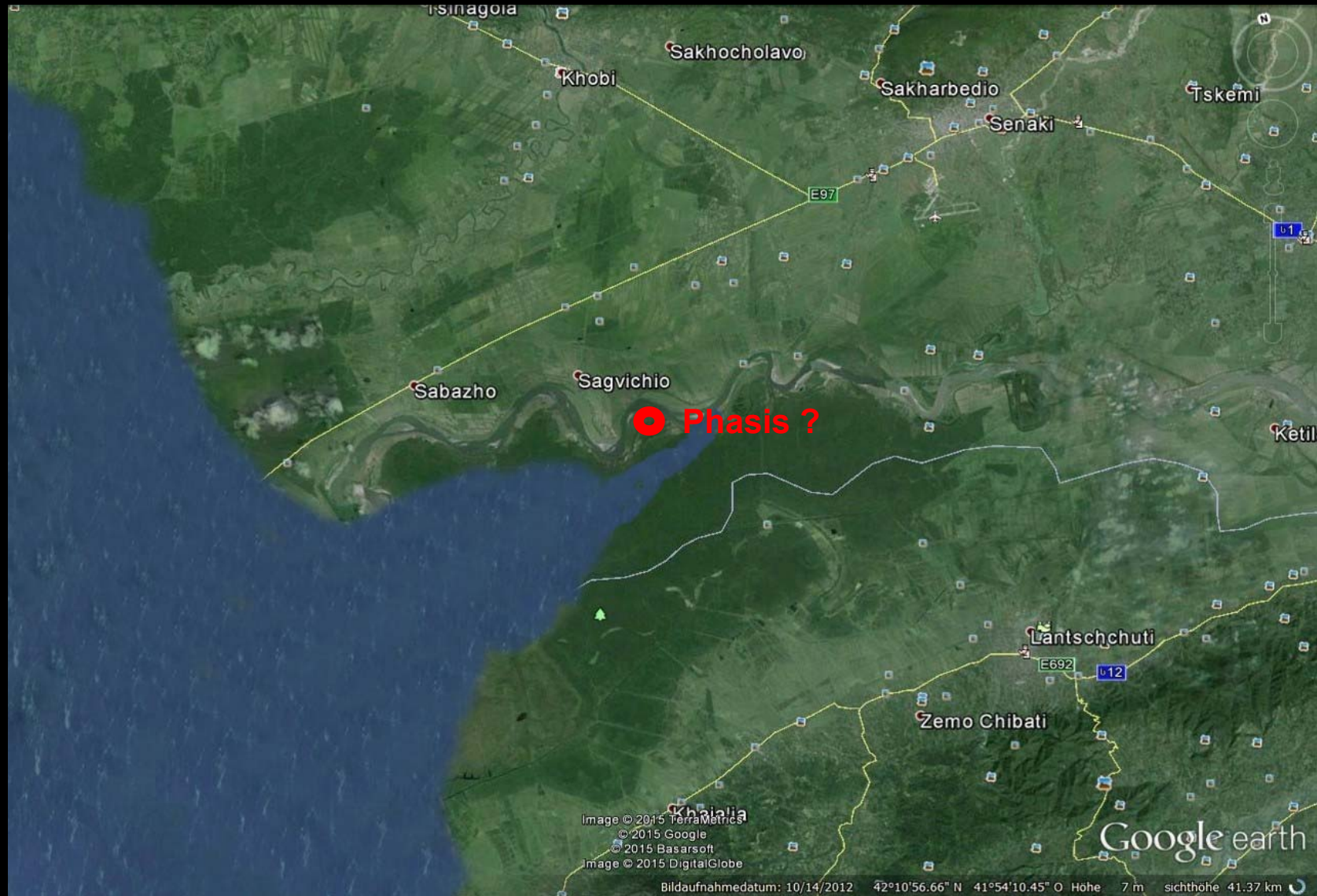
+1 m

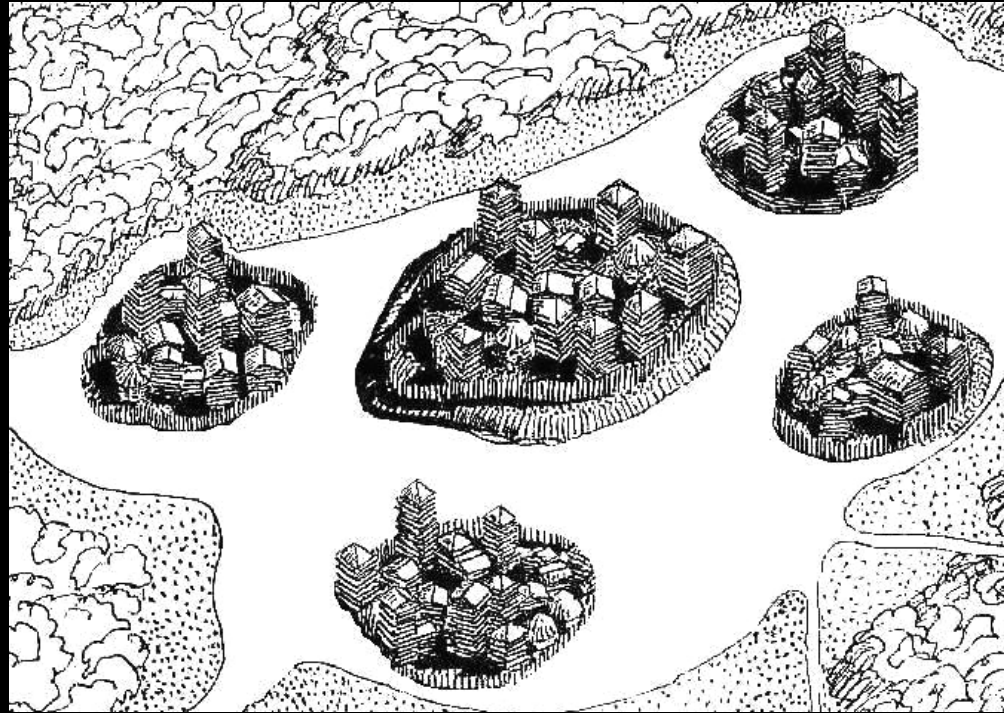
+2 m

+5 m

Change of sea level (6th c BC- 2nd AD?) with +1 m. provokes coastal line shifting with +10-13 km to East; + 2 m- with 15 km; +4/5 m. --25-27 km

Reconstruction of estuary of river Phasis

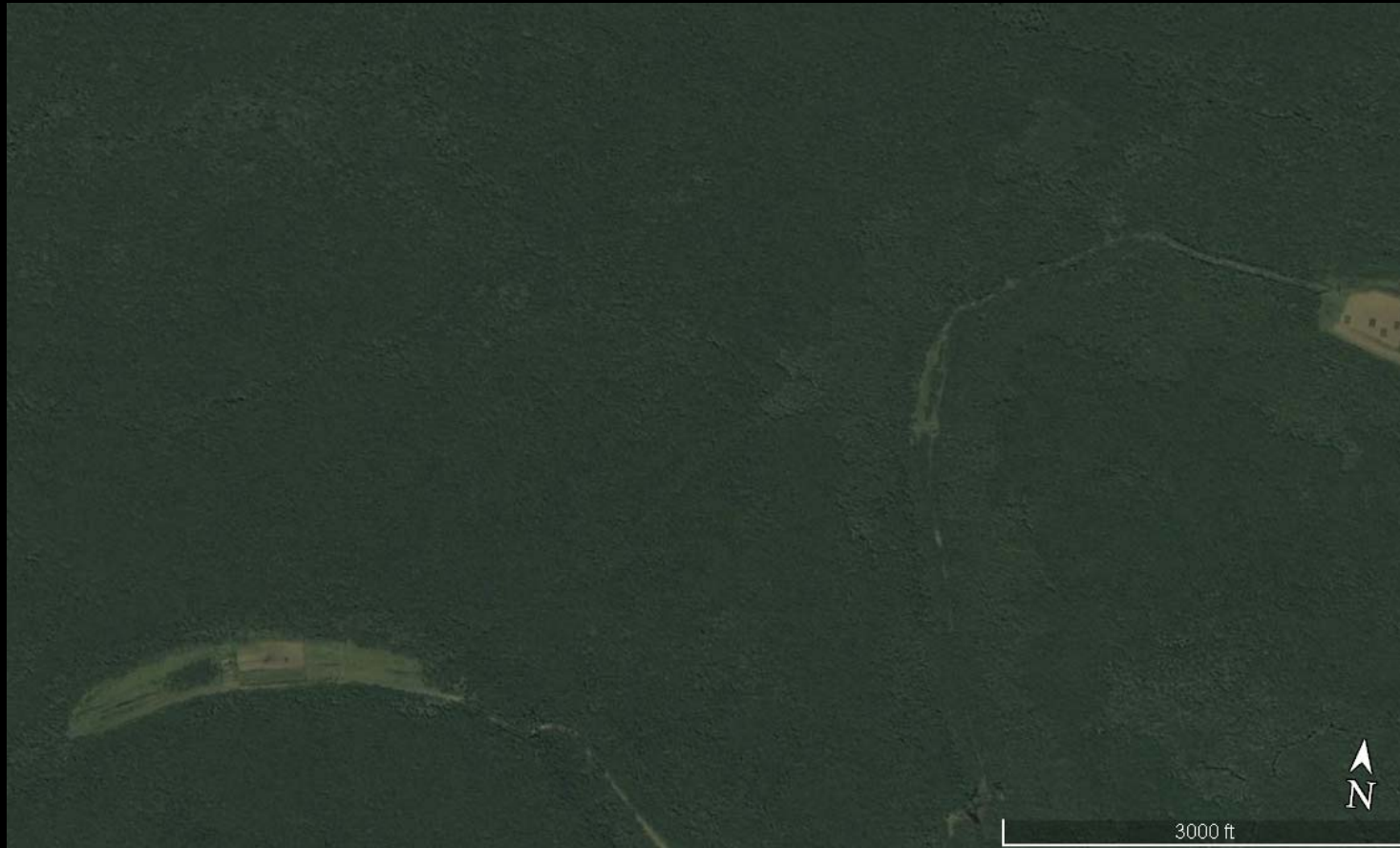




Sagvichio settlement consists of five hills and is surrounded with elevated agricultural lands; total area consists of thousand hectares .

Central hill of the monument is oval with 7-8 m high (diameter 60 m). Only several survey trenches are arranged on this hill and following are discovered along with local production items: fragments of kylix (First half of 6th c BC); skyphos fragments; Lesbian, Chian, Thasian amphoras of 5th c. BC.

Phasis' dense forest



Methodology of survey works – to use the lidar — a type of radar mounted on low-flying aircraft, illuminating the target with pulsed laser light and measuring the reflected pulses with a sensor.

What we have to expect, if Phasis

Classical time (Phichvnari necropolis, 5th-4th cc BC)



According to A. Kakhidze)

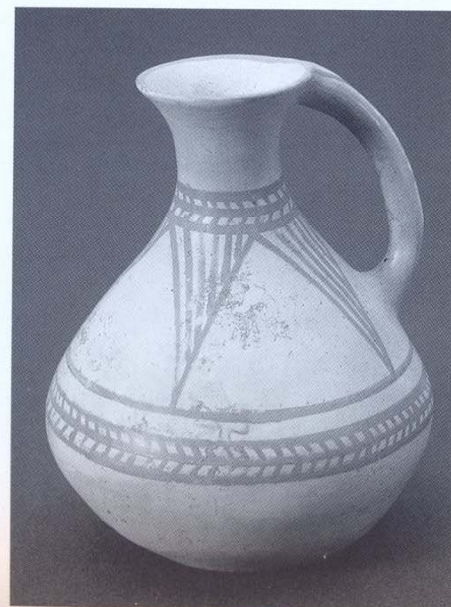
Hellenistic period items



1



3



5

(According to Ot. Lordkipanidze)

Vani discoveries



(According to Ot. Lordkipanidze and D. Kacharava)

Roman time in Georgia – Apsaros/Gonio fortress, 1st – 3rd cc





Phasis.

Thank you for attention.