

# Kobe University Brussels European Centre Newsletter



**SAKAI Kazunari**

## New Director appointed to KUBEC



## INDEX

- News
- Research at Kobe University (1st half of 2019)
- Past Events in 2019
- In-house seminars and workshop at KUBEC
- Social Media
- Let us know what you think about our English website

## ◆ NEWS

### New director appointed to the Kobe University Brussels European Centre

Kobe University opened the Brussels European Centre (KUBEC) in September 2010 and established the Centre for EU Academic Collaboration in July 2013 to promote further exchange with Europe. Our activities in Europe include seminars, workshops, student and researcher's exchanges, joint research projects, as well as an annual high-level symposium organised at KUBEC. This year marks the 10<sup>th</sup> anniversary of KUBEC's establishment

and a commemorative symposium will be held on 22 October, 2019. Titled 'Open Science, Evolving Societies: New Horizons for EU-Japan Research' it will focus on three key topics among recent research trends: EPA/SPA, food technology and cultural heritage.

In April 2019, Prof. Kazunari Sakai, Professor of the Graduate School of Intercultural Studies, was appointed as the new Executive Director to KUBEC. He built up his career as a professor of international relations engaging in various international collaborative activities

with European partners including experiences as an invited professor of Sciences Po and Université Paris Nanterre. His current research focuses on the EU's external relations with neighboring countries, migration issues across the Mediterranean Sea, and global governance related to migration.

Led by the former Executive Director Prof. Ken-ichi Yoshida, Professor of Graduate School of Science,



YOSHIDA Ken-ichi

Technology and Innovation for over 6 years, KUBEC has always taken the initiatives for Kobe University's international activities in Europe, including annual symposia and workshops to encourage joint research and participation in European research grants such as Horizon 2020. Kobe University now has more than 140 European partners, and students also enjoy mobility programmes including Erasmus+. In April 2019, Prof. Yoshiida was appointed as the new Executive Director to the Center for EU Academic Collaboration, which aims to promote international collaboration with Europe at the university level.

Prof. Sakai will take over Prof. Yoshida's activities and is also looking forward to working with him in order to reinforce Kobe University's presence in Europe under an initiative by Prof. Masahiko Yoshii, our newly appointed Executive



YOSHII Masahiko

Vice-President in charge of International Exchange.

Comment from Prof. Sakai:

*'KUBEC is a principal organ for Kobe University in promoting global partnerships in education and research, particularly in our relations with Europe. As the new Executive Director of KUBEC I will work to further enhance cooperation with our European partners and to strengthen our connections with Kobe University alumni in Europe.'*

Our new members are looking forward to seeing you at the 10<sup>th</sup> anniversary KUBEC symposium in October!

→ [KUBEC WEBPAGE](#) AND [AN INTERVIEW WITH NEW EXECUTIVE VICE PRESIDENT](#)

## Network Meeting for Japanese Studies in Central-Eastern Europe in Budapest

On February 2 and 3 the Network Meeting for Japanese Studies in Central-Eastern Europe in Budapest took place, co-organized by Kobe University and Japan Foundation Budapest.



This event provided an opportunity for faculty heads from key universities representing the field of Japanese studies in Central and Eastern Europe to discuss current trends in research and education on Japan. Kobe University was represented by the event's moderator Professor Kiyomitsu Yui (former Executive Assistant to the President in Charge of International Collaboration) and Professor Tetsu Ichizawa (Graduate School of Humanities) who gave a special lecture titled "Reconsideration of Princess Mononoke – A Historian's perspective"

introducing the influence of Japan in popular culture.

On February 4, Kobe University and Japan Foundation Budapest jointly held a lecture for the general public titled "The Way to Preserve Historical Documents in the Community".



→ [EVENT NEWS](#)

## Staff Training Week 2019 was held

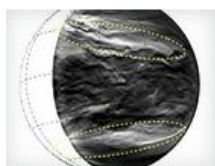
During 10-14 June, Kobe University held a staff training week at Kobe. The programme was held to invite administrative staff from partner universities to exchange knowledge, ideas and best practices in management of international affairs. 8 participants joined from partner universities, universities including Universite de Paris Diderot in France, Technical University Darmstadt in Germany and Jagiellonian University in Poland from European partners. The participants and Kobe University international staff enjoyed sharing knowledge and cultural exchange including a visit to the Maritime Sciences campus to see University Ship and the museum, and short trips to Kobe and Kyoto.



→ [EVENT NEWS](#)

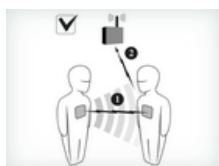


## ◆ Research at Kobe University (1st half of 2019)



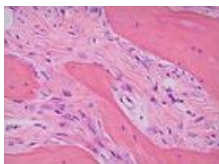
-Giant pattern discovered in the clouds of planet Venus  
[Research News](#)

Space/Planetary Science, Meteorology



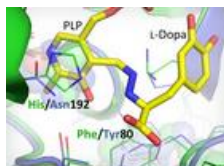
- Identifying “friends” in an objective manner: A new method for extracting the backbone of networked social interactions  
[Research News](#)

Socioeconomics, Statistics



- Vitamin D and immune cells stimulate bone marrow disease  
[Research Article](#)

Biology, Medicine/Health Science



-Cell architects: engineered “smart cells” improve production of pharmaceutical raw materials  
[Research News](#)

Biochemistry, Computer Science

## Research at Kobe

All you need to know about our research is now on the website including news, spotlight, researchers, facilities and collaboration.



## Supervolcano paper features in Scientific Reports Top 100 Read Articles of 2018!

[Research News](#)

If you have any questions about research news, please contact us at  
[intl-relations \(a\)office.kobe-u.ac.jp](mailto:intl-relations@office.kobe-u.ac.jp)

## ◆ Past Events in 2018-2019

7 Mar.	The 8 <sup>th</sup> International Seminar on Integration of Special Computable General Equilibrium and Transport Modelling <a href="#">Programme</a>
30 Nov.	Brussels Student Workshop 2018 <a href="#">Programme</a>
25-26 Oct.	Japan - Georgia - Western Europe: Cultural Memory and Cultural Transfer <a href="#">Programme</a>
03 Oct.	The 6th Bruegel - Graduate School of Economics, Kobe University conference "International Trade and the EU-Japan Economic Partnership Agreement" <a href="#">Programme</a>

## ◆ In-house seminars and workshops at KUBEC

Information on academic seminars and workshops at KUBEC can be found at:  
[http://www.office.kobe-u.ac.jp/ipiep/kubec/index\\_en.html](http://www.office.kobe-u.ac.jp/ipiep/kubec/index_en.html)

If you are interested in participating in these events, please contact us at  
[intl-kobe\\_u\\_bxl\(a\)office.kobe-u.ac.jp](mailto:intl-kobe_u_bxl(a)office.kobe-u.ac.jp)  
for further information.

## ◆ Social Media

Kobe University is now on Social Media!



KobeU\_Global



KobeUniversity  
Global



Kobe University



kobe\_university

Summer Greeting from official  
mascot 'Shindai-Uribo' on Social  
Media!



## ◆ Let us know what you think about our English website

Feedback is always welcome. Please let us know your opinion by filling in a 3-minute questionnaire about the new website:  
Link to [questionnaire](#)

Thank you very much for reading this newsletter. We wish you all a joyful summer holiday!  
Kobe University Brussels European Centre E-newsletter has been sent to you because you have shown an interest in our activities. If you prefer not to receive it, please send a message to us at [intl-kobe\\_u\\_bxl\(a\)office.kobe-u.ac.jp](mailto:intl-kobe_u_bxl(a)office.kobe-u.ac.jp). Thank you.



[Kobe University Brussels European Centre](#)

Boulevard de la Plaine 5 Pleinlaan, Bruxelles 1050 Brussel

Email: [intl-kobe\\_u\\_bxl\(a\)office.kobe-u.ac.jp](mailto:intl-kobe_u_bxl(a)office.kobe-u.ac.jp)

Copyright © 2019 Kobe University. All Rights Reserved.