

Kobe University Brussels European Centre Newsletter



New Liaison Office in Romania

INDEX

- News
- Research at Kobe University (1st half of 2018)
- Past Events in 2018
- In-house seminars and workshop at KUBEC
- Social Media
- Let us know what you think about our English website

◆ NEWS

New liaison office for international collaboration in Romania

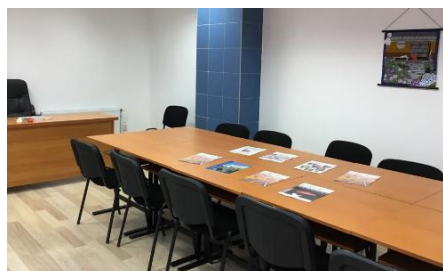
On May 17, in cooperation with Babeş-Bolyai University, we established the Kobe University and Babeş-Bolyai University International Collaboration Centre (KU-UBB ICC) in Romania. This is our third overseas base in Europe, following the Brussels Office (Belgium, 2010) and the Kraków Office (Poland, October 2010). As well as the location within Babeş-Bolyai University in Romania, the Centre is also physically located within Kobe University's Institute for Promoting International Partnerships, providing a base in Japan for Babeş-Bolyai University.

Babeş-Bolyai University is one of Kobe University's active exchange partner universities in Europe with an agreement concluded in 1998 and with

Erasmus+ since 2016. In economics, Professor Masahiko Yoshii (Vice President in Charge of Personnel Evaluation and Planning) and Professor Ioan Alin Nistor (Dean of Faculty of Business Administration) had had a long term research collaboration. He is also an alumni of our Graduate School of Economics.

Professor Noriyuki Inoue (Executive Vice President in Charge of Academic Exchange), Professor Kiyomitsu Yui (Executive Assistant to the President in Charge of International Collaboration) traveled to Romania to conduct the memorandum of understanding signing ceremony for the new Centre.

This centre's mission is to fostering academic exchange and collaboration between the two universities. We will use this centre not only to deepen on-going collaboration but also into expand to various research area with joint academic events.



Comment from Prof. Ioan Alin Nistor:

"We are very happy and honored to have Kobe University, such a prestigious university, opening an office at Babes-Bolyai University. This office is a recognition of the long and excellent partnership that our institutions have and makes us work harder to take this partnership to the next level. This office sets a new benchmark for internationalization and will be a landmark for the activities that will be carried out here. Kobe University and Babes-Bolyai University are making now history together."

http://www.kobe-u.ac.jp/en/NEWS/info/2018_05_28_01.html

http://www.office.kobe-u.ac.jp/ipiep/romania/index_en.html

Visit from the Advisor to the Kobe University Brussels European Centre

For three days from May 23 to 25, Advisor to the Kobe University Brussels European Centre Mr. Patrick Vittet-Philippe visited Kobe University and discussed Kobe University's activities in Europe.

Mr. Patrick Vittet-Phillipe, former Head of Japan and Russia Desks, Directorate-General for Research and Innovation, European Commission was appointed to the Kobe University Brussels European Centre in February 2017. Since then, he advises the University on various matters, including applications to education and research funding schemes in Europe and collaboration with European partner institutions.

(his activity report)

During his visit, he discussed with Professor Noriyuki Inoue (Executive Vice President in Charge of International Exchange), Professor Kiyomitsu Yui (Executive Assistant to the President in Charge of International Collaboration), and Professor Ken-ichi Yoshida (Executive Director of Kobe University Brussels European Centre) about how we are strengthening our presence in Europe.

He also attended a seminar on international communication for researchers aimed at members of Kobe University as the main speaker to talk about the importance of international communication for



research results and related initiatives from the European Commissions.

After the seminar Mr. Vittet-Philippe met with the Student PR Ambassadors and gave them some advice about their activities.



He attended a meeting with the professors who will participate in the annual Kobe University Brussels European Centre Symposium. This year's event will take place on October 24, co-organized with Vrije Universiteit Brussel under the title of "Smart Cities, Secure Societies: Breakthroughs in EU and Japan Research Cooperation".

http://www.kobe-u.ac.jp/en/NEWS/info/2018_05_31_01.html

Seminar held on European research funding schemes

On April 13, Kobe University hosted a seminar about EU Research and Innovation programme Horizon 2020, the German Academic Exchange Service (DFG) and the German Research Foundation (DAAD).

The morning session was supported by the EU-Japan Centre for Industrial Cooperation (H2020 National Contact Point in Japan) and EURAXESS. It provided an introduction to EU research funding program Horizon 2020, how to apply for the program and examples of past participants.

This was followed in the afternoon by an introduction to research and education schemes offered by the German government, supported by the German Academic Exchange Service (DAAD) and the German Research Foundation (DAAD).

Kobe University encourages its researchers to actively participate in European Commission programmes

such as HORIZON 2020 and Erasmus+, as well as funding for education and research offered by individual European countries. KUBEC supports researchers to find a proposal, matchmaking and writing an application.

We are open to support you if you are considering collaboration with Kobe University researchers.

http://www.kobe-u.ac.jp/en/NEWS/info/2018_04_19_02.html



Visit and signing ceremony at the Technical University of Munich

On March 1, Professor Noriyuki Inoue (Executive Vice President in Charge of International Exchange and Internal Control), Professor Matsuto Ogawa (Executive Vice President in Charge of Research and Industry-University Cooperation) and Professor Akio Tomiyama (Dean, Graduate School of Engineering) visited the Technical University of Munich in Germany.



Both sides agreed to conclude an inter-university agreement for academic exchange, and a signing ceremony was

held during the visit. A memorandum of understanding for inter-university student exchange was also concluded alongside this agreement.

http://www.kobe-u.ac.jp/en/NEWS/info/2018_03_09_04.html

PhD Workshop co-organized with the Japan Foundation Budapest

On February 3 and 4 Kobe University collaborated with the Japan Foundation Budapest to co-host a PhD workshop in Hungary. The workshop was attended from Kobe University by Professor Kiyomitsu Yui and Associate Professor Ryusuke Masaki (Graduate School of Humanities).

The event was aimed at PhD students



selected from within Eastern Europe, and included presentations about Japanese studies, discussions, and research advice. Associate Professor Masaki gave the closing lecture on February. This event has been held four times to date, and Kobe University was the only participating university from Japan – we received positive feedback for our institution's strong presence in Eastern Europe.

The event provided opportunities to deepen knowledge about relations between Japan and Eastern Europe, and to strengthen exchange between academics and students in Slovakia and

Hungary in the field of Japanese studies, particularly Japanese culture.

In October 2015 Kobe University established a Liaison Office in Kraków, Poland, and we have strengthened our collaboration with Eastern Europe in education and research.

http://www.kobe-u.ac.jp/en/NEWS/info/2018_02_28_01.html

◆ Research at Kobe University (1st half of 2018)



- The stick insects that survive being eaten by birds

http://www.kobe-u.ac.jp/research_at_kobe_en/NEWS/news/2018_05_28_01.html

Biology, Ecology/Environment



- Genome editing method targets AIDS virus

http://www.kobe-u.ac.jp/research_at_kobe_en/NEWS/news/2018_05_18_01.html

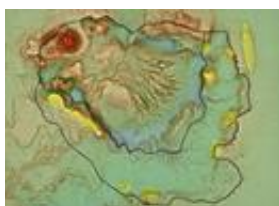
Biology, Infectious/ Emerging Diseases



- Children prefer distribution by equal outcome when they share

http://www.kobe-u.ac.jp/research_at_kobe_en/NEWS/news/2018_02_27_01.html

Social/ Behavioral Science



- Giant lava dome confirmed in Japan's Kikai Caldera

http://www.kobe-u.ac.jp/research_at_kobe_en/NEWS/news/2018_02_09_01.html

Earth Science/ Geography

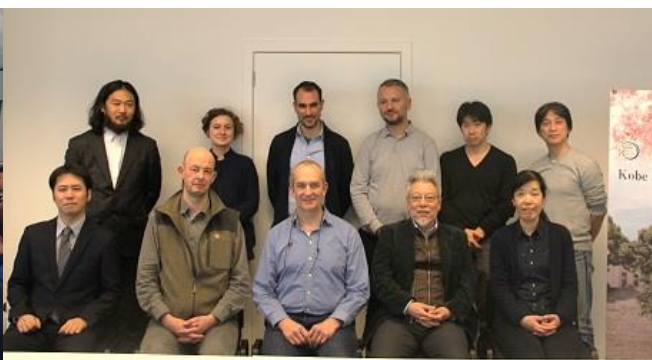
Research at Kobe

All you need to know about our research is now on the website including news, spotlight, researchers, facilities and collaboration.

If you have any questions about research news, please contact us at
[intl-relations \(a\)office.kobe-u.ac.jp](mailto:intl-relations@office.kobe-u.ac.jp)

◆ Past Events in 2017-2018

14 Mar.	International Seminar on Integration of Spatial Computable General Equilibrium and Transport Modelling http://www.office.kobe-u.ac.jp/ipiep/materials/20180314.pdf
5 Dec.	The CRIL-Kobe-Louvain Collaborative Workshop on Constraint Programming and SAT http://www.edu.kobe-u.ac.jp/istc-tamlab/cpsat/workshop2017/
24 Nov.	Brussels Student Workshop 2017 'What are students interested in? Europe and Japan Similarity and Difference' http://www.office.kobe-u.ac.jp/ipiep/materials/programme20171124_en.pdf
18 Nov.	New Perspectives in Japanese Studies Part 2 http://www.office.kobe-u.ac.jp/ipiep/materials/programme20171118_en.pdf
2 Oct.	The 5th Bruegel - Graduate School of Economics, Kobe University conference Europe and Japan: Monetary policies in the age of uncertainty http://bruegel.org/events/europe-and-japan-monetary-policies-in-the-age-of-uncertainty/
21 Sep.	Network meeting held at Brussels European Centre http://www.kobe-u.ac.jp/en/NEWS/info/2017_10_04_01.html



◆ In-house seminars and workshop at KUBEC

Information on academic seminars and workshops at KUBEC can be found at:
http://www.office.kobe-u.ac.jp/ipiep/kubec/index_en.html

If you are interested in participating in those events, please contact us at
[intl-kobe_u_bxl\(a\)office.kobe-u.ac.jp](mailto:intl-kobe_u_bxl(a)office.kobe-u.ac.jp)
for further information.

◆ Social Media

Kobe University is now on Social Media!



KobeU_Global



KobeUniversity
Global



Kobe University



New!

kobe_university

Meet our official mascot
'Shindai-Uribo' on Social Media!



◆ Let us know what you think about our English website

Feedback is always welcome. Please let us know your opinion by filling in a 3-minute questionnaire about the new website: Link to [questionnaire](#)

Thank you very much for reading this newsletter. We wish you all a joyful summer holiday!

Kobe University Brussels European Centre E-newsletter has been sent to you because you have shown an interest in our activities.

If you prefer not to receive it, please send a message to us at [intl-kobe_u_bxl\(a\)office.kobe-u.ac.jp](mailto:intl-kobe_u_bxl(a)office.kobe-u.ac.jp). Thank you.



[Kobe University Brussels European Centre](#)

Boulevard de la Plaine 5 Pleinlaan, Bruxelles 1050 Brussel

Email : [intl-kobe_u_bxl\(a\)office.kobe-u.ac.jp](mailto:intl-kobe_u_bxl(a)office.kobe-u.ac.jp)

Copyright © 2017 Kobe University. All Rights Reserved.

